

During the estival period, the wine's amateurs are still more attentive with the conservation of their bottles. To meet the needs of everybody, FONDIS invents a fourth solution of air-conditioning for winecellars : the winemaster door Wine PC15



■ EQUIPMENT

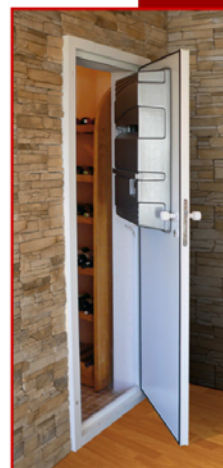
The cooling door is supplied with jamb, handle and lock unit, peripheral seal, 8 white plastic caps and mounting screws.

■ EASY TO INSTALL

The door unit is very easy to install as you simply hang your door (only 8 mounting screws all together), fit the air conditioner and connect it to an electric outlet.

■ DISCRETION, AESTHETIC AND RELIABILITY

The white door fits in with all types of interior decor. The door consists of a double steel envelope insulated with polyurethane and a high performance insulation. The air conditioner is built into the door and therefore totally invisible from outside your cellar. The « door and air conditioner unit » only 26 cm thick can be fitted into small spaces.



And more ...

■ SPECIFICATIONS

Air conditioning capacity at 12°	Overall Dimensions	Cooling power	Absorbed Power	Power supply	Coolant	Sound level from 1m to 3m
Until 15 m ³	H.2020 X W760 X D. 254.5	450 W	390 W	230 - 240 V 50 Hz	R 404 a (without CFC)	42 dB - 40dB

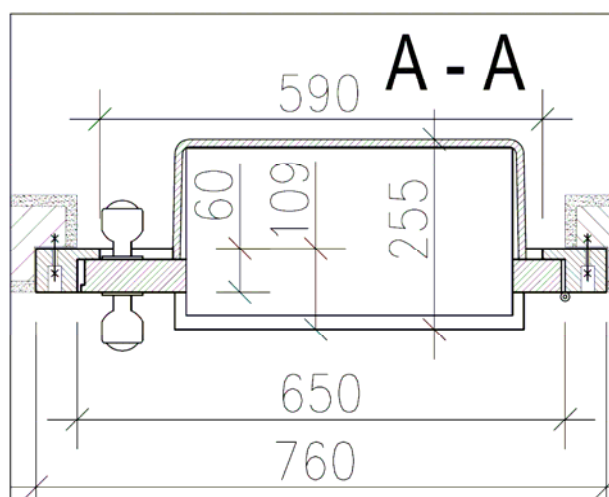
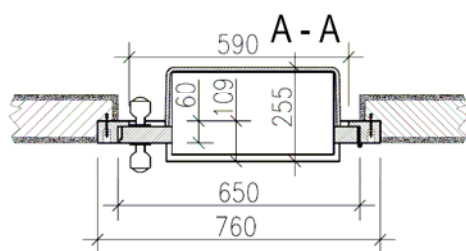
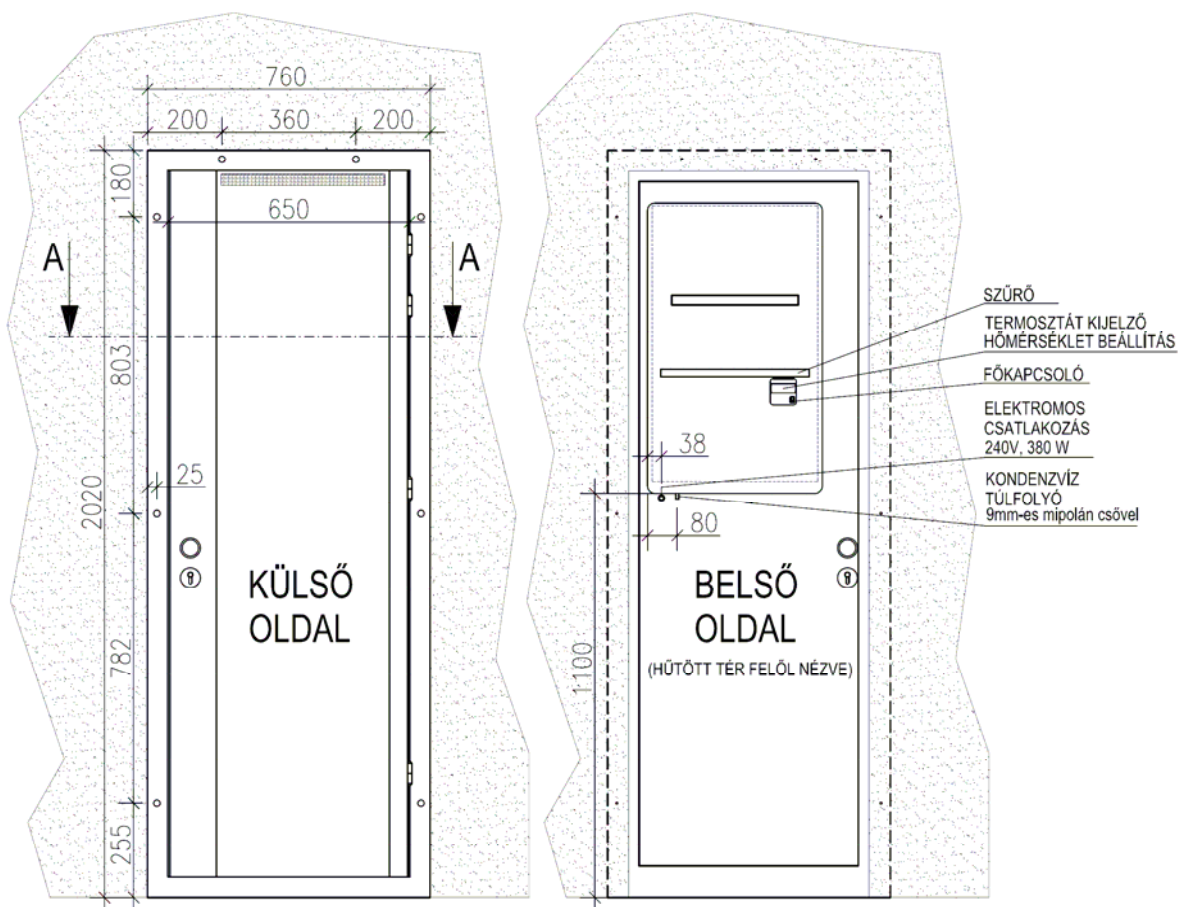
■ CHOICE OF INSULATION**

CELLAR VOLUME (m ³)	EXPANDED POLYSTYRENE I = 0.044W / m°C	EXTRUDED POLYSTYRENE I = 0.030W / m°C	POLYURETHANE FOAM I = 0.025W / m°C
3	40	30	30
6	60	40	40
8	70	50	40
10	90	60	50
12	100	70	60
14	110	70	60
15	110	80	70

* depending on insulation / ** insulation recommended (wall, floor and ceiling)



FONDIS WINE PC15



Tárgy: FONDIS WINE PC15
bortároló helyiség hűtő ajtóval

A•S Hungária Kft

1113, Bp. Daróci u. 1-3.
tel./fax.: 279-1088, 209-2187

www.ash.hu